

## Helpful Hints

### CENTRAL HEATING AND BOILER CHOICE

Most of our stoves are able to provide central heating if required, but it is essential that the system is balanced; that is to say, the central heating load and room requirements (stove site) match.

For instance, it would be uneconomic to choose a boiler with an output of **42,000** Btu's plus a stove providing a room output of **6-8Kw** when, in fact, the room would require **3.4Kw**. In practice, the stove would shut down to the **3 - 4Kw** output along with the boiler. In effect, the boiler you had anticipated to produce **42,000** Btu's would actually produce **21,000** Btu's.

To ensure we meet your requirements, a complete range of stove and boiler combinations have been developed that can provide variations from **70,000** Btu's to water and **3.7Kw** to room to **8,000** Btu's to water and **17.5Kw** to room.

If you only require hot water, please ask about our stainless steel boilers for direct systems.

### SIZING

A good rule of thumb guide to calculate the heat requirement of a given room is:

Height x Width x Depth in metres divided by 14  
(or in old money, divide the cubic footage of the room by five hundred)

This gives you the Kilowatt requirement.

Multiply this result by 3400 to get the Btu's requirement.

**Formula:**  $\frac{H \times W \times D}{14} = \text{Kilowatts}$  Or  $\frac{H \times W \times D}{14} \times 3,400 = \text{Btu's}$

This is based on average house insulation with room temperatures of 20°C and an outside ambient temperature of -1°C

When choosing a stove/boiler combination, you should also take the following into account:

Allow **8,000** Btu's for domestic hot water

Allow an additional 20% of the total Kw or Btu's requirement as calculated above for heat loss in the system.

### OTHER NOTES

Boilers reduce firebox temperatures and, as clean burn relies on a high firebox temperature, the airwash may not be as effective in a fully boilered stove. Pipe thermostats must be used to control the flow and return water temperatures. The use of pipe thermostats will assist the clean burn effect and prolong the boiler life. The use of a stove thermometer can be an aid to ensuring correct running temperatures in both dry and wet stoves.

If you are contemplating a heating system using under floor heating make sure you use a heat store in the circuit, to allow for the changes within the refuelling cycle. The outputs in our specifications are tested using a two hour refuelling cycle.

Booklets detailing installation requirements and operating instructions are supplied with each stove. They contain important information on installation as well as details of our lifetime guarantee.

Burn dry wood. Fuel with more than 20% moisture will seriously impede the performance of your stove.

The illustrations in this brochure do not necessarily comply with local building regulations.

Woodwarm stoves are defined as Class I appliances.



e&eo

# WOODWARM

Metal Developments Ltd. The Workshop, Wheatcroft Farm, Cullompton, Devon EX15 1RA  
Telephone: 01884 35806 Fax: 01884 35505 Email: [sales@woodwarmstoves.co.uk](mailto:sales@woodwarmstoves.co.uk)  
[www.woodwarmstoves.co.uk](http://www.woodwarmstoves.co.uk)



# WOODWARM



*A new era in clean, effective wood burning stoves*

**WOODWARM**



# WOODWARM

For centuries fireplaces have been the focus of every home, providing the light, warmth and entertainment that our forefathers worshipped in days of yore. Fires dispel the gloom of cold damp winter afternoons and bring warmth and cheer into the heart of the home.

An open fire has also historically been associated with a warm chimney and, on testing, it can often be shown that 90% of the heat from the fire is lost to the chimney and the outside air. Woodwarm stoves are safe, single, self-contained units, which eliminate this waste and put the heat back into the room where it belongs.

**WOODWARM** stoves have been manufactured in the beautiful Devon countryside with care and craftsmanship for over thirty years. Woodwarm stoves are constructed from high quality steel with cast iron and stainless steel fittings. All are individually built by craftsmen and carefully inspected to ensure consistent quality. Throughout product development procedures, we pay attention to detail, creating innovative and contemporary products. At Woodwarm we exhaustively test all manufacturing specifications and materials.

All **WOODWARM** stoves feature an excellent air wash system. After circulating the stove, pre-heated air flushes down the double glazed door keeping the glass perfectly clean at all times – even at low temperatures. Superior clean-burn efficiency means that not only is more heat achieved on less fuel, but combustion products in the flue are also reduced, causing fewer flue problems. Reduction in pollution combined with more efficiency creates a really environmentally friendly device.

The **WOODWARM** range of stoves also provide one of the most comprehensive ranges of hot water and central heating boilers available. For free standing stoves, boilers can be fitted at manufacturing stage or later if required. We are still making boilers for stoves some 20 years old at our workshops in Devon.

At **WOODWARM** we can also offer also offer a bespoke service of stove building by arrangement to suit individual requirements.

**WOODWARM** - Multifuel and wood burning heating at its best



*Woodwarm Fireview 20kw Double Sided Double depth on pedestal*



*The Fireview 6kw Profiled Flat Top with 4" legs fitted*



## **The Fireview Range**

*Your options are endless with the Fireview Range with outputs ranging from 5kw up to 20kw to heat any size of room and if required, boiler options between 8,000 btu's and 70,000 btu's to water. As with all Woodwarm stoves the Fireview range offers a full airwash system, overnight burning and are easy to light and use. A beautiful feature to suit all fireplace and central heating combinations.*

### **The Fireview 6kw**

*The Fireview 6kw with its range of canopy options is a very popular stove in the Fireview Range available with a profiled flat top (shown), rolled flat top, low canopy or high canopy. The Fireview 6kw has an amazing all fire view of the complete firebox. A distinguished stove for any style of fireplace.*



### **The Fireview 9kw**

*The original Fireview stove. The 9kw has a larger firebox and still retains the unique Woodwarm cleanburn airwash system. As on all the Fireview stoves the fully riddling grate allows easy ash removal from the ash box area. A full range of canopies allow you choice to blend with your décor. This stove is also available with straight sides if required.*



*The Fireview 9kw Low Canopy*



*Canopy options*



*The Fireview 12kw Flat Top*

## **The Fireview 12kw**

*The elegantly proportioned Fireview 12kw has a larger firebox still, capable of taking a 19" log. The flexibility of our boiler options can give you anything between 8,000 btu's to 50,000 btu's to your central heating system with this stove.*

## **The Fireview 12kw +**

*With exactly the same proportions as the Fireview 12kw but fitted with a larger door the 12 PLUS offers you a full view of the firebox. All canopy and boiler options available as the Fireview 12kw. Please note a 7" flue is required for this stove.*



- *Full airwash system*
- *Riddling Grate*
- *Ashpan for easy cleaning*
- *Choice of legs, plinth or pedestal*



*The Fireview 12kw PLUS High Canopy*



*Canopy options*



The Fireview 16kw Flat Top



## The Fireview 16kw

The Fireview 16kw with its larger castings is a grand stove enabling you to burn logs up to 23" long. It is available as either a flat top or low curved canopy.

## The Fireview 20kw

The largest stove in our Fireview range it provides a huge firebox taking a 25" log. It offers the same canopy options as the 16kw and is able to produce up to 70,000 btu's of heat to water with the full boiler options.

- Boilers up to 70,000 btu's
- Choice of 4 colours
- Totally British
- Quality fittings



The Fireview 20kw Flat Top with pedestal



Canopy options



The Fireview Slender 5kw  
Low Canopy with plinth



## Fireview Slender Range

The Woodwarm Fireview Slender Range of stoves enable choice in large fireplaces or inglenook situations where room size would normally mean a smaller stove is needed. The reduced depth of our slender range is also a benefit where the amount of stove projection into the room is a consideration.

### The Fireview Slender 5kw

A stunning centrepiece to any room, this stove is based on our Fireview 6kw. It takes a 6" flue with the versatility of either a profiled flat top, rolled flat top or low curved canopy (rear flue option only on canopy).

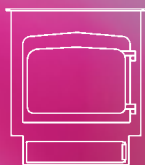
### The Fireview Slender 7kw

This beautiful stove is based on our 9kw, its reduced depth gives it a lower output but still enables you to burn 17" logs. We also produce a Fireview 10kw PLUS and 14kw in this range.

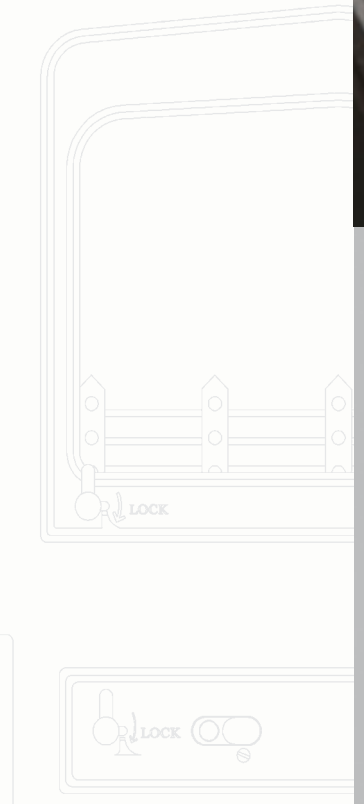


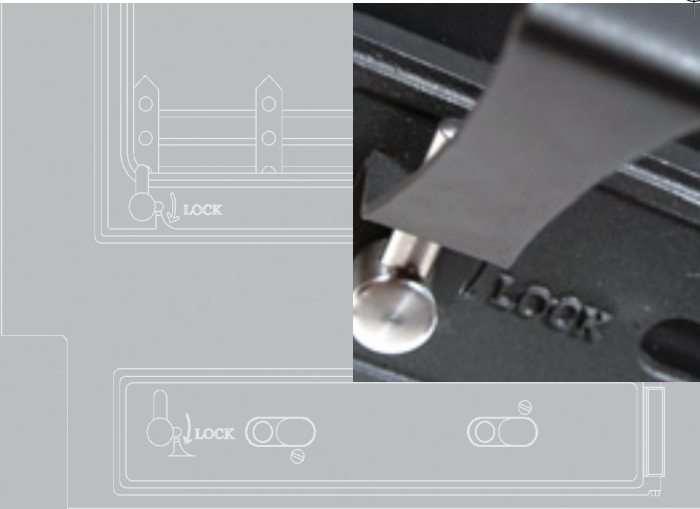
The Fireview Slender 7kw Flat Top

- Boiler options – 8,000 – 50,000 btu's
- Choice of 4 colours
- Full riddling grate
- Ashpan for easy cleaning
- Full airwash system
- Choice of legs, plinth or pedestal



Canopy options





*The Fireview 6kw double-sided single depth Flat Top*

## **Fireview Double Sided Range**

*The versatility of our Fireview range of stoves mean that all the range can be made as double-sided stoves. They are available as either a double depth stove or single depth with a door both sides for a fantastic view of the fire from either side still incorporating the Woodwarm airwash system and full riddling grate.*



### **The Fireview 6kw Single Depth**

*One of the most popular in our range of double sided stoves, a focal point and a fantastic feature to any combination of rooms. The 6kw give you a full view of the fire from both sides.*

### **The Fireview 6kw Double depth**

*Watch the flames dance in this larger version of the above, which is the equivalent to two 6kw stoves back to back, the increased depth giving 10kw output. A real talking point at any dinner party!*

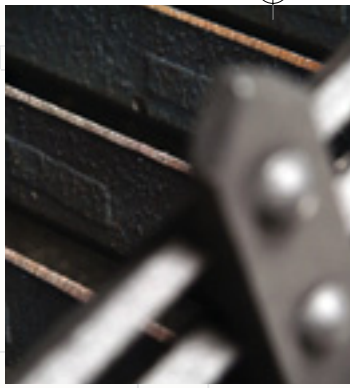


*The Fireview 6kw double-sided double depth Low Canopy*

Please see separate specification sheets for dimensions and flue sizes of our double sided range of stoves.



*Canopy options*



*The Fireview 4kw Inset Flat Top*

## **Fireview Inset Range**

*Although open fireplaces are an attractive feature of a living area they lose a lot of heat up the chimney. A Woodwarm Fireview Inset stove gives you all the beauty of an open fireplace and the benefit of all the warmth generated by the stove.*



### **The Fireview 4kw Inset**

*The Fireview 4kw inset has been designed to give optimum heat output to the room whilst only having a minimal protrusion of 115mm on the hearth. The Fireview 4kw fits neatly into an existing fireback for easy installation.*

### **The Fireview 6.5kw Inset**

*A beautiful addition to any standard fireplace the Fireview 6.5kw gives more heat output to the room, also enabling you to fit larger logs into the firebox, still retaining all the benefits of the 4kw.*



*The Fireview 6.5kw Inset Curved Canopy*



*Canopy options*



*The Wildwood 9kw Low Canopy*



## **Wildwood Range**

*The Woodwarm Wildwood Range of stoves have been developed to be environmentally friendly, burning only wood as a totally sustainable fuel.*

### **The Wildwood 9kw**

*A focal point to any room with all the airwash features of the Fireview range. Maintaining a bed of ash throughout the burning cycle these stoves can be run for over three weeks without the need to remove the ash.*

### **The Wildwood 12kw +**

*As with all the Wildwood range this stove is available as either a flat top or low curved canopy. All stoves have removable baffles for easy cleaning access to the chimney. The Wildwood Range of Stoves are available in sizes 5kw, 6kw, 9kw, 12kw PLUS and 16kw.*



*The Wildwood 12kw PLUS Flat Top*



*Canopy options*



*The Enigma 8kw Profiled Flat Top*

## **Enigma Range**

*The Woodwarm Enigma Range combines a traditional two-door appearance with all the benefits of a single door. All Enigma stoves have the full airwash system.*

### **The Enigma 8kw**

*A pretty free standing stove for any type of fireplace available as either a profiled flat top or low curved canopy. The fitted multirole grate is capable of burning most types of fuel.*

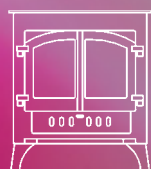
### **The Enigma 3.5kw Inset**

*The Woodwarm Enigma Inset Stove nestles naturally into a standard fireplace opening. It is available as either a flat top or curved canopy. It has a hearth protrusion of 200mm.*

- 2 door effect stove
- Full airwash system
- Multi-role grate



*The Enigma 3.5kw Inset Curved Canopy*



*Canopy options*

# Stove Dimensions

Page 2	Overall Height (mm)	Overall Width (mm)	Overall Depth (mm)	Flue Outlet Size (mm)
Fireview 6kw Flat Top	613	555	385	152
Fireview 6kw Profiled Flat Top	605	505	356	152
Fireview 6kw Low Canopy	830	604	395	152
Fireview 6kw High Canopy	926	593	395	152
Fireview 9kw Flat Top	683	640	383	152
Fireview 9kw Low Canopy	1028	710	410	152
Fireview 9kw High Canopy	1054	710	410	152

Page 3	Overall Height (mm)	Overall Width (mm)	Overall Depth (mm)	Flue Outlet Size (mm)
Fireview 12kw Flat Top	683	673	457	152
Fireview 12kw Low Canopy	940	750	498	152
Fireview 12kw High Canopy	1060	750	486	152
Fireview 12kw Plus Flat Top	710	675	457	178
Fireview 12kw Plus Low Canopy	960	750	498	178
Fireview 12kw Plus High Canopy	1075	748	486	178

Page 4	Overall Height (mm)	Overall Width (mm)	Overall Depth (mm)	Flue Outlet Size (mm)
Fireview 16kw Flat Top	750	740	460	178
Fireview 16kw Low Canopy	1067	813	498	178
Fireview 20kw Flat Top	750	794	502	178
Fireview 20kw Low Canopy	1067	865	540	178

Page 5	Overall Height (mm)	Overall Width (mm)	Overall Depth (mm)	Flue Outlet Size (mm)
Fireview 5kw Slender Flat Top	613	555	322	152
Fireview 5kw Slender Low Canopy	830	604	331	152
Fireview 5kw Slender Profiled Flat Top	605	505	302	152
Fireview 7kw Slender Flat Top	683	640	322	152
Fireview 10kw Plus Slender Flat Top	710	675	356	178
Fireview 14kw Slender Flat Top	750	740	362	178

Page 7	Overall Height (mm)	Overall Width (mm)	Overall Depth (mm)	Flue Outlet Size (mm)
Fireview Inset 4kw Flat Top	695	775	400	152
Fireview Inset 4kw Low Canopy	825	785	400	152
Fireview Inset 6.5kw Flat Top	695	775	460	152
Fireview Inset 6.5kw Low Canopy	825	785	460	152

Page 8	Overall Height (mm)	Overall Width (mm)	Overall Depth (mm)	Flue Outlet Size (mm)
Wildwood 5kw Flat Top	686	557	395	152
Wildwood 5kw Low Canopy	900	604	395	152
Wildwood 6kw Flat Top	686	557	456	152
Wildwood 6kw Low Canopy	900	604	456	152
Wildwood 9kw Flat Top	759	642	456	152
Wildwood 9kw Low Canopy	997	642	456	152
Wildwood 12kw Plus Flat Top	759	680	528	152
Wildwood 12kw Plus Low Canopy	1019	740	538	152
Wildwood 16kw Flat Top	757	750	530	178
Wildwood 16kw Low Canopy	1082	814	530	178

Page 9	Overall Height (mm)	Overall Width (mm)	Overall Depth (mm)	Flue Outlet Size (mm)
Enigma 8.0kw Flat Top	648	575	425	152
Enigma 8.0kw Low Canopy	813	640	425	152
Enigma Inset 3.5kw Flat Top	590	624	333	n/a
Enigma Inset 3.5kw Low Canopy	675	640	345	n/a

For full dimensions and boiler options on the above stoves please refer to the separate specification sheets provided for each model.

The dimensions on our double sided stoves are available on the separate specification sheets and on our website [www.woodwarmstoves.co.uk](http://www.woodwarmstoves.co.uk)